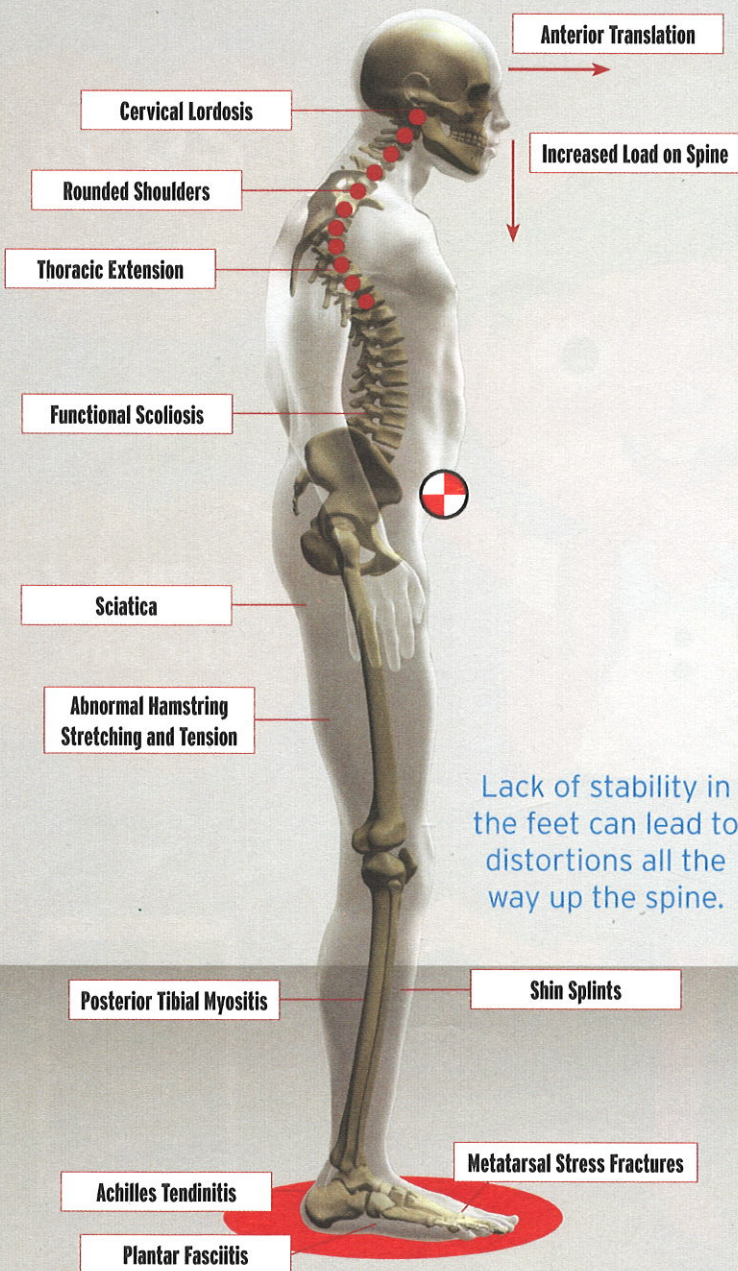


Foot-Spine Connection

Faulty foot biomechanics negatively impact all supporting joints above the foot.

An Unstable Foundation

Stability Achieved!

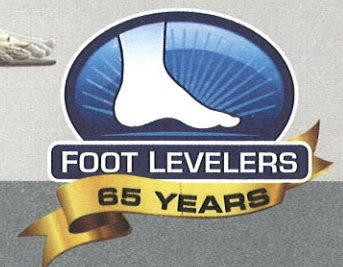


Lack of stability in the feet can lead to distortions all the way up the spine.



The center of gravity of each segment is aligned directly over the center of the supporting joint.

Custom orthotics can restore balance by providing support for the collapsed structures in the feet, creating a sturdy base for the Kinetic Chain.



800.553.4860

FootLevelers.com | f t v